

# Tylactin RESTORE™ Powder 5 gram Protein Equivalent (modified glycomacropeptide for tyrosinemia)

MLT55001D1

## PRODUCT INFORMATION

Berry Tylactin RESTORE Powder 5 gram Protein Equivalent (modified glycomacropeptide for tyrosinemia)

0.7 oz (20g) packet

Reimbursement Code: 24359-0551-07

Manufactured by Cambrooke Therapeutics, Inc. Ayer, MA 01432 [www.cambrooke.com](http://www.cambrooke.com)

## DISPENSE BY PRESCRIPTION

Tylactin RESTORE Powder (modified glycomacropeptide for tyrosinemia) is a medical food for the dietary management of tyrosinemia (TYR).

## DESCRIPTION

Tylactin RESTORE Powder (modified glycomacropeptide for tyrosinemia) is a specially formulated prescription medical food for the clinical dietary management of Hereditary Furmarylacetacetase Deficiency (Tyrosinemia Type I), Oculocutaneous Tyrosinemia (Tyrosinemia Type II), and Type III.

Tylactin RESTORE Powder is to be used only under medical supervision. Tylactin RESTORE Powder has been developed, labeled and should be administered in accordance with the FDA statutory and regulatory definition of Medical Foods.

Congress defines "Medical Food" in the Orphan Drug Act and Amendments of 1988 as a formulation to be administered enterally (or orally) *under the supervision of a physician* and which is intended for the specific dietary management of a disease or condition for which distinctive nutritional requirements, based on recognized scientific principles are established by medical evaluation.

Tylactin RESTORE Powder is supplied in a single dose, 0.7 oz (20 g) packets, sixty packets per case. Each packet contains 5 grams of protein equivalent and provides B vitamins and electrolytes.

## PRIMARY INGREDIENTS

### Glycomacropeptide

Glycomacropeptide (GMP) is a 64-amino acid whole protein derived from whey. GMP has a unique amino acid profile, which includes an absence of the aromatic amino acids, phenylalanine, tryptophan and tyrosine and higher concentrations of isoleucine and threonine, compared to other dietary proteins.<sup>1</sup> The naturally low levels of tyrosine and phenylalanine contained in commercial GMP make this protein an alternative to synthetic free amino acid based protein for the management of TYR. The GMP in Tylactin RESTORE Powder is modified by enhancing levels of tryptophan, arginine, leucine, histidine, and cysteine which are naturally deficient in pure GMP. The addition of these amino acids is necessary to meet daily-required intake of these essential and indispensable amino acids, which cannot be synthesized de novo by the body.

While GMP in its pure form contains no tyrosine or phenylalanine, the process of extracting and refining glycomacropeptide results in the inclusion of trace quantities of tyrosine and phenylalanine (about 0.16 mg of tyrosine and 1.8 mg of phenylalanine per protein equivalent gram). Tyrosine and phenylalanine are the offending amino acids in Tyrosinemia Type I, II, and III and intake must be severely restricted to prevent neurodevelopmental and physiological consequences.

### Micronutrients and Macronutrients

Patients with Tyrosinemia have a severely restricted diet to minimize intake of amino acids phenylalanine and tyrosine that are found naturally in all foods containing protein, including all meats, dairy, legumes, and many vegetables, fruits and grains. Tyrosine is low in natural protein but phenylalanine is a precursor of tyrosine, so limiting phenylalanine intake limits the phenylalanine-tyrosine conversion. As such, there is meaningful risk and challenges in receiving recommended daily intake of many micronutrients. Tylactin RESTORE Powder contains B vitamins and electrolytes. Additional supplementation of a multivitamin may be needed and should be discussed with a physician.

## Complete Ingredients

Sugar, whey protein isolate (glycomacropeptide), leucine, citric acid, arginine, sodium citrate, malic acid, natural berry flavor (dextrose, modified food starch triacetin, and tricalcium phosphate), histidine, potassium chloride, tryptophan, black/purple carrot juice (color), cysteine, vitamins (niacinamide [vitamin B3], calcium pantothenate [vitamin B5], pyridoxine HCl [vitamin B6], riboflavin [vitamin B2], folic acid, biotin, cyanocobalamin [vitamin B12]), Stevia rebaudiana leaf extract (organic sweetener). Contains milk and soy. Also contains corn.

## GENERALLY RECOGNIZED AS SAFE

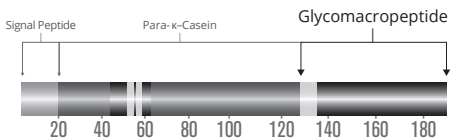
The ingredients in Tylactin RESTORE Powder are Generally Recognized As Safe (GRAS). This is the statutory safety standard of the U.S. Food and Drug Administration (FDA). The standard for an ingredient to achieve GRAS status requires technical demonstration of non-toxicity and safety, general recognition of safety through widespread usage and agreement by experts in the field.

## MEDICAL FOOD STATUS

### INDICATIONS FOR USE

Tylactin RESTORE Powder is a medical food for the dietary management of individuals under a physician's care for Hereditary Furmarylacetacetase Deficiency (Tyrosinemia Type I), Oculocutaneous Tyrosinemia (Tyrosinemia Type II), and Type III.

### κ-Casein (bovine)



## TYROSINEMIA, PHENYLALANINE AND PHENYLKETONURIA (PKU)

Tyrosinemia patients have a defective enzyme fumarylacetoacetate which affects the conversion of tyrosine to neurotransmitters and metabolites. Tyrosine is present in very low levels in natural dietary protein but is biosynthesized within the body based on the level of consumption of phenylalanine. Blood levels and dietary monitoring must be done for both phenylalanine and tyrosine. Tyrosinemia is similar to phenylketonuria (PKU) which involves an enzyme defect in the same phenylalanine-tyrosine pathway (PKU patients have a defect in the enzyme phenylalanine hydroxylase which affects the conversion of phenylalanine to tyrosine). Both disorders require that strict attention be paid to the levels of phenylalanine that are consumed.

### CLINICAL EXPERIENCE

Tyrosinemia (TYR) and Phenylketonuria (PKU) are both inborn errors of protein metabolism that require dietary management including medical foods to supply necessary protein (essential and conditionally essential amino acids). For TYR, the amino acids phenylalanine and tyrosine must be restricted; for PKU, only the amino acid phenylalanine must be restricted. Whereas Glytactin medical food is supplemented with tyrosine (as it is safe for PKU), Tylactin is not supplemented with tyrosine. The following evidence is based on glycomacropeptide (GMP) and Glytactin medical foods for the nutritional management of PKU.

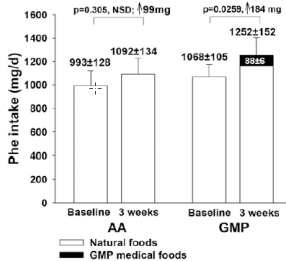
Pure GMP is an excellent, all natural source of protein that does not contain the amino acids tyrosine and phenylalanine, making it an alternative to 100% synthetic free amino acids traditionally used for PKU and TYR medical foods. GMP is supplemented with certain critical amino acids to optimize the protein value. Tylactin contains the same GMP as Glytactin (prescribed for PKU), however the supplemental amino acids added to Tylactin do not contain tyrosine, since individuals with TYR are unable to metabolize tyrosine, as noted previously. While the clinical evidence below details the safety and efficacy of GMP for PKU, this evidence has correlation for TYR because the nutritional management is essentially the same, i.e., the medical formula contains GMP intact protein as the main protein source and the offending amino acid(s) (tyrosine and phenylketonuria) is/are restricted.

Published in the American Journal of Clinical Nutrition in July 2016, an outpatient randomized crossover trial was led by the University of Wisconsin's Department of Nutritional Science to test the safety and efficacy of a diet using traditional amino acid medical foods versus glycomacropeptide (GMP) based medical foods as part of the dietary management of PKU. Thirty early-treated PKU subjects completed the study at the Waisman Center, Madison, WI and Boston Children's Hospital, Boston, MA. Cambrooke Therapeutics Glytactin medical food products were solely used in the GMP medical food arm of the study.

Following a three-week wash out period where amino acid-based medical foods were used, each subject completed three weeks of a low phenylalanine (Phe) diet treatment using amino acid based medical foods as their primary source of protein equivalent and three weeks using GMP medical foods as their primary source of protein equivalent. The same daily-prescribed protein equivalents were used throughout the study. Subjects were counseled and monitored for their nutrient intake from supplemental standard food products.

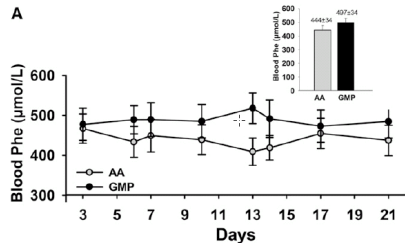
Serum chemistry profiles were analyzed routinely to monitor phenylalanine and tyrosine levels and the change in plasma Phe concentrations in subjects following the use of amino acid-based metabolic formula and compared to plasma Phe concentrations of the same patients following the consumption of GMP medical foods. Neuropsychological, behavioral, and intelligence testing was done on each subject to assess executive function.

Following the study, researchers concluded that there was no significant increase in plasma Phe in spite of the fact that the GMP medical foods contains low levels of Phe. They also noted that the patients had fewer side effects of gastrointestinal distress. Behavior ratings and executive function results were not significantly different following consumption of either forms of protein. Patients felt less hunger during the day on a GMP-based protein diet and found the medical foods products, in general, more acceptable. In conclusion, the GMP medical foods products were found to be a safe and acceptable option for the nutritional management of PKU.<sup>19</sup>

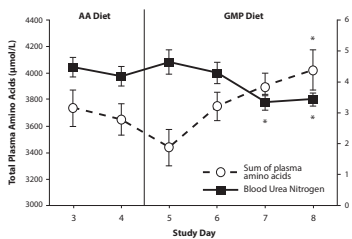


*Figure 4B from page 8: This figure illustrates the total Phe intake and compares the Phe intake while on the amino acid based protein medical foods to the Phe intake while on the GMP medical foods. Phe intake did not increase significantly when on an amino acid based medical foods but was higher when on the GMP medical foods (P=0.0259) because of the natural Phe contained in the GMP. The intake of Phe from natural diet sources was not significantly different for either protein treatment.<sup>19</sup>*

*Figure 6 A from page 9: This figure shows fasting blood Phe levels done based on analysis of dried blood spots of subjects, analyzed with tandem mass spectrometry. No significant differences are seen in blood Phe levels due to treatment with an amino acid protein diet versus a GMP protein diet, even though the diet contained higher levels of natural phenylalanine.<sup>19</sup>*

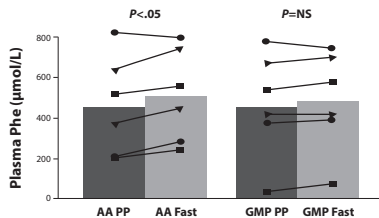


Inpatient clinical studies completed at the University of Wisconsin with eleven phenylketonuria patients were conducted to investigate the safety and acceptability of substituting protein from glycomacropeptide for synthetic amino acid formula. Subjects consumed their usual amino acid based formula for four days followed by a glycomacropeptide formula sparingly supplemented with essential amino acids for four days. Two of the tests measured blood urea nitrogen (BUN) and plasma insulin levels. These tests suggested that protein from the glycomacropeptide formula was retained better by the body than the synthetic amino acid formula. The results showed that each phenylketonuria patient fed a glycomacropeptide medical food improved on three important biomarkers.<sup>5</sup>



This figure shows that the concentration of total amino acids in plasma was significantly greater, and the concentration of BUN was significantly lower, with Glycomacropeptide compared with the synthetic amino acid diet when measured 2.5 hours after consumption. This result is consistent with slower absorption of amino acids from an intact natural source of protein. It also suggests that fewer amino acids are degraded for urea production and instead are retained for protein synthesis when glycomacropeptide is substituted for synthetic amino acids as a protein source.<sup>5</sup>

This figure shows the concentration of phenylalanine in postprandial (PP) plasma compared with fasting (Fast) plasma in subjects with phenylketonuria fed glycomacropeptide (GMP) compared with 100% synthetic amino acids (AA) as the sole protein source for four days. There was no significant change in plasma phenylalanine concentration comparing fasting postprandial concentrations when consuming a glycomacropeptide diet ( $P=0.349$ ), however, the synthetic amino acid diet showed a significant increase in plasma phenylalanine ( $P=0.048$ ).<sup>5</sup>



Patients who use 100% synthetically derived amino acid as their primary protein source in metabolic formulas are commonly known to experience a feeling of hunger shortly after consumption when amino acid formula does not adequately suppress production of Ghrelin (hunger hormone). A glycomacropeptide based formula has been shown to provide satiety to patients by suppressing the production of Ghrelin similar to natural protein and it is theorized that the branch chain amino acids stimulate the production of Cholecystokinin, a peptide released after eating, that may act as an appetite suppressant by providing a sense of satiety.<sup>6</sup> A study measuring postprandial concentrations of insulin and total plasma amino acid levels, demonstrated both to be higher after consuming formula based on natural glycomacropeptide than what is seen after consuming 100% synthetically derived amino acid based formulas. Concentrations of Ghrelin (the hunger hormone) were 30% lower following consumption of the glycomacropeptide based formula than the synthetic amino acid based formula. Patients felt fuller longer, suggesting that products made with glycomacropeptide improve satiety when compared to synthetic amino acid based formula.<sup>7,8</sup>

Skeletal fragility has been observed in individuals with phenylketonuria. Researchers have observed a decrease in bone mineral density and higher incidence of fractures in patients with phenylketonuria compared to control subjects without the disorder.<sup>9,10,11</sup> Studies have shown a range in 30-50% of patients with phenylketonuria have reduced bone mineral density (BMD).<sup>12,13,14</sup> Mouse studies compared mice with phenylketonuria fed low-phenylalanine synthetic amino acid diets with phenylketonuria mice that were fed low-phenylalanine diets based on glycomacropeptide sparingly supplemented with limited essential amino acids. Reductions in both femoral size and tolerance before maximum load tolerated before fracture were observed in mice fed the low-phenylalanine synthetic amino acid diet compared with the glycomacropeptide diet. This suggests that providing dietary protein from glycomacropeptide rather than synthetic amino acids lessened the phenylketonuric bone phenotype of skeletal fragility that is common to phenylketonuria patients.<sup>15</sup>

The traditional 100% synthetically derived amino acid diet for phenylketonuria has a high dietary acid load<sup>16</sup> that may not just affect the skeletal system. It is suspected to carry an additional metabolic burden to the body. Adverse effects of synthetically derived amino acid diets in mouse studies include metabolic stress as reflected in increased energy expenditure and intake of food and water, increased renal and spleen mass, and elevated plasma cytokine concentrations consistent with systemic inflammation. The glycomacropeptide diet significantly reduced these adverse effects in mice. Total fat mass, % body fat, and the respiratory exchange ratio (CO<sub>2</sub> produced/O<sub>2</sub> consumed) were significantly lower in PKU mice fed glycomacropeptide compared with synthetic amino acid diets.<sup>17</sup>

## PHARMACOKINETICS

Tylactin (modified glycomacropeptide for tyrosinemia) contains glycomacropeptide as a primary ingredient. The low level of aromatic amino acids (phenylalanine, tryptophan and tyrosine) and concentration of large neutral amino acids (LNAA) threonine, valine and isoleucine make glycomacropeptide an ideal protein replacement therapy for tyrosinemia patients. The naturally high concentration of LNAA in glycomacropeptide are enhanced with supplemental LNAA to compete with the offending amino acids tyrosine and phenylalanine for specific carrier proteins that transport LNAA across the intestinal mucosa and blood-brain barrier.<sup>15,16,17</sup> This increased competition likely restricts the ability of tyrosine and phenylalanine to enter the brain where it can become a neurotoxin leading to mental impairment for the patient with tyrosinemia.

As primarily whole protein, Tylactin (modified glycomacropeptide for tyrosinemia) is digested more slowly than synthetic amino acids, allowing the passage from the stomach, through the intestinal wall and into the bloodstream.<sup>18</sup> This normal digestion process allows the body to efficiently break down and synthesize the protein.

## Precautions and Contraindications

Tylactin RESTORE Powder is intended for the complete protein for patients with diagnosed tyrosinemia. Individuals with other inborn errors of protein metabolism or those without a tyrosinemia diagnosis can experience complications if using this product due to its extremely low level of tyrosine and phenylalanine which contribute to mood regulation, alertness, dopamine transmission, learning and memory.

Tylactin RESTORE Powder contains protein from whey. Therefore, it may not be suitable for those with an allergy to milk or milk products. Tylactin RESTORE Powder contains a small amount of tyrosine and phenylalanine (0.16 mg of tyrosine and 1.8 mg of phenylalanine per protein equivalent gram) due to the process of extracting and refining glycomacropeptide; the tyrosine and phenylalanine content needs to be accounted for in the total daily tyrosine and phenylalanine prescription.

## Adverse Reactions

Post – marketing surveillance has shown no adverse reactions.

## Drug Interactions

None known.

## Toxicity

None known.

## SPECIAL POPULATIONS

- Indicated for tyrosinemia patients over 12 months of age. Always check with physician for proper dosage recommendations.
- Tylactin RESTORE Powder has not sought FDA approval for use in infants with tyrosinemia, but glycomacropeptide is widely found in infant formula containing whey protein.
- Compliance to a low tyrosine/phenylalanine diet must accompany the use of Tylactin for all tyrosinemia patients, including those considering having children or who are pregnant.

## DOSAGE AND ADMINISTRATION

Tylactin RESTORE Powder is a medical food to be re-hydrated with water or liquid and administered enterally by mouth or tube, under the supervision of a physician.

Recommended daily requirements vary with age, weight and activity levels. Follow recommendation of medical practitioner to determine the best amount of Tylactin RESTORE Powder to be used each day.

## HOW SUPPLIED

Tylactin RESTORE Powder 5g Protein Equivalent is supplied in 0.7 oz (20g) packets. The packets are packaged 60 per case (reimbursement code: 24359-0551-07). Keep sealed in a cool, dry place.

## REFERENCES

- 1 Etzel MR (2004) Manufacture and use of dairy protein fractions. *J Nutr* 134:9965-10025.
- 2 van Calcar, S.C., MacLeod, E.L., Gleason, S.T., Etzel, M.R., Clayton, M.K., Wolff, J.A. and Ney, D.M. (2009) Improved nutritional management of tyrosinemia by using a diet containing glycomacropeptide compared with amino acids. *The American Journal of Clinical Nutrition*. 89:1068-1077, 2009.
- 3 Burton-Freeman BM. *Physiol Behav*. 2008 Jan 28;93(1-2):379-87. Epub 2007 Oct 26. Glycomacropeptide is not critical to whey-induced satiety, but may have a unique role in energy intake regulation through cholecystokinin (CCK).
- 4 MacLeod E, Clayton M, van Calcar S, Ney D. Breakfast with glycomacropeptide compared with Amino Acids Suppresses Plasma Ghrelin Levels in Individuals with Tyrosinemia. *Molecular Genetics and Metabolism*. 2010; Vol 100, Issue 4: 303-308.
- 5 Veldhorst MA, Nieuwenhuizen AG, Hochstenbach-Waelen A, et al. Effects of complete whey-protein breakfasts versus whey without glycomacropeptide-breakfasts on energy intake and satiety. *Appetite*. 2009;52:388–395. [PubMed]
- 6 Allen JR, Humphries IRJ, Walters D., et al. Decreased Bone Mineral Density in Children with Phenylketonuria. *Am J Clin Nutrition* 1994; Vol 59: 419-22.
- 7 Zeman J, Bayer M, Stephen J. Bone Mineral Density in Patients with Tyrosinemia. *Acta Paediatrica*. 1999; Vol 88: 1348-51.
- 8 Al-Qadreh A, Schulpis KH, Athanasopoulou H, Mengreli C, Skarpalezou A, et al. (1998) Bone mineral status in children with tyrosinemia under treatment. *Acta Paediatr* 87: 1162–1166.
- 9 Pérez Dueñas, B., Cambra, F.J., Vilaseca, M.A., Lambruschini, N., Campistol, J., Camacho, J.A. New approach to osteopenia in phenylketonuric patients, *Acta Paediatr*. 91 (2002) 899–904.
- 10 Modan-Moses, D., Vered, I., Schwartz, G., Anikster, Y., Abraham, S., Segev, R., Efrati, O. Peak bone mass in patients with tyrosinemia, *J. Inherit. Metab. Dis*. 30 (2007) 202–208.
- 11 Koura, H.M., Abdallah Ismail N., Kamel, A.F., Ahmed, A.M., Saad Hussein, A., Effat, L.K. A long-term study of bone mineral density in patients with tyrosinemia under diet therapy. *Arch. Med. Sci*. 7 (2011) 493–500.
- 12 Pietz J, Kreis R, Rupp A, et al. Large neutral amino acids block phenylalanine transport into brain tissue in patients with tyrosinemia. *J Clin Invest* 1999;103:1169–78.
- 13 Manz F, Schmidt H, Scharer K, Bickel H. Acid-base status in dietary treatment of tyrosinemia. *Pediatr Res* 1977; 11(10 Pt 2):1084-1087.
- 14 Solverson P, Murali SG, Brinkman AS, Nelson DW, Clayton MK, et al. (2012) Glycomacropeptide, a low-phenylalanine protein isolated from cheese whey, supports growth and attenuates metabolic stress in the murine model of tyrosinemia. *Am J Physiol Endocrinol Metab* 302: E885–895.
- 15 Pietz J, Kreis R, Rupp A, et al. Large neutral amino acids block phenylalanine transport into brain tissue in patients with phenylketonuria. *J Clin Invest* 1999;103:1169–78.
- 16 Pardridge WM. Blood-brain barrier carrier-mediated transport and brain metabolism of amino acids. *Neurochem Res*. 1998;23:635–44. CrossRefMedline.
- 17 Hidalgo JJ, Borchardt RT. Transport of a large neutral amino acid (phenylalanine) in a human intestinal epithelial cell line: Caco-2. *Biochim Biophys Acta*. 1990;1028:25–30.
- 18 Gropper SS, Acosta PB. Effect of simultaneous ingestion of L-amino acids and whole protein on plasma amino acid and urea nitrogen concentrations in humans. *JPEN J Parenter Enteral Nutr* 1991;15:48–53.
- 19 Clayton M, Levy H, Murali, S, Ney D, Rice, G, Rohrer, F, Stroup, B, Glycomacropeptide for nutritional management of phenylketonuria: a randomized, controlled, crossover trial. *The American Journal of Clinical Nutrition*, 10.3945, 116.135293, 2016.